

WorkiMed Tablet Mini Cart



This new ergonomically designed medical trolley is height-adjustable by means of a hand lever located underneath the work surface. The hand lever activates the height adjustment mechanism, allowing the trolley to be raised and lowered from 770 mm to 1120 mm without any effort, simply by pressing the lever. The gas lift on the trolley provides smooth adjustment for all sizes and strengths of users, allowing for maximum comfort when sitting or standing.

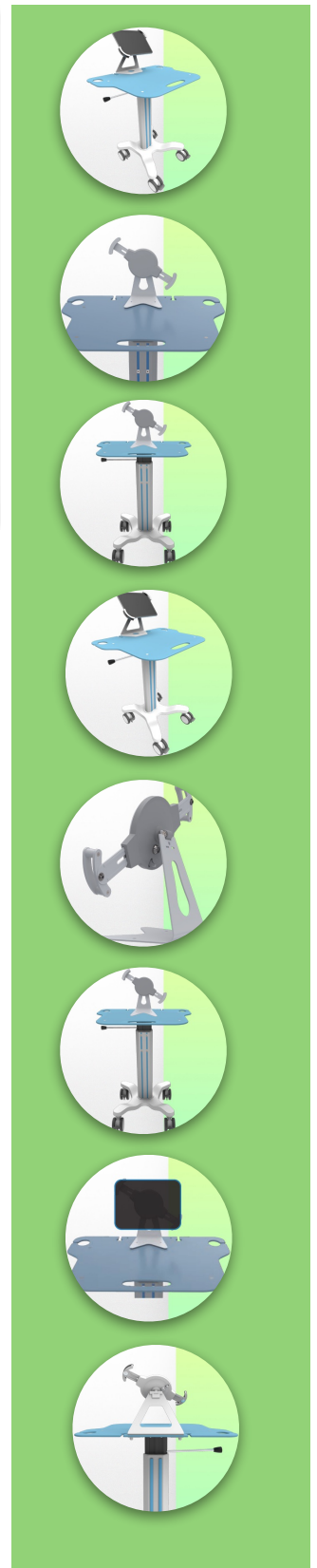
Its lightweight and robust aluminium construction allows the new WorkiMed Tablet Mini Cart to be used for intensive movement without strain.

An open architecture provides access points throughout the surface, facilitating connections from the laptop to the keyboard and mouse.

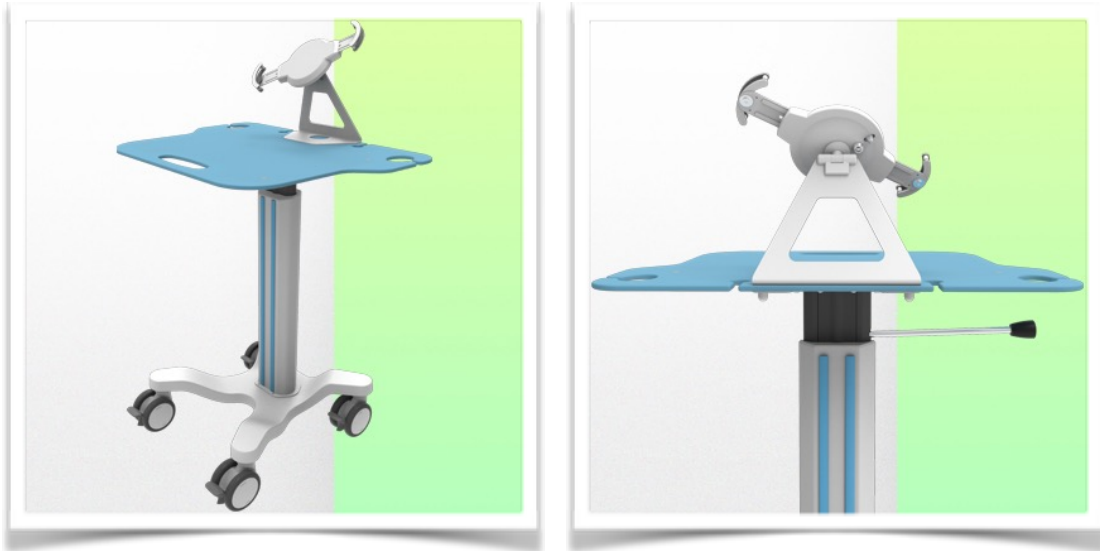
The minimal footprint is also an advantage, measuring only 616mm at the base and 660 x 500mm at the work surface, allowing it to be moved even in tight spaces in the hospital.

The WorkiMed Tablet Mini Cart complies with hospital hygiene standards and can be disinfected down to the last detail, including the wheels, with no rough edges in its design for thorough and easy cleaning to help control infection.

The surface of the worktop is made of hard, shiny and highly impact-resistant acrylic glass. This synthetic material is virtually unbreakable: it is 250 times stronger than glass of the same thickness!



WorkiMed Tablet Mini Cart



This new generation of computerised medical trolleys is height adjustable for standing or sitting, easy to move and hygienic and is perfect in any patient environment.

The tablet is secured in this new generation of trolleys with an anti-theft bolt system on the right and left side of the tablet support mechanism. This is compatible with tablets from 9" to 11".

The ergonomics of the worktop has not been forgotten, it includes in this new concept, a handle for transport, two supports for barcode reader on the left and right. On the back of the worktop there are also two integrated cable holders.

The central column is also equipped with a sliding support to adjust the height of your optional accessories such as a service basket.

Equipped with comfortable CE medical anti-static wheels, the new WorkiMed Tablet Mini Cart can be manoeuvred effortlessly by nursing staff at the point of care, the wheels are 100 mm in diameter and all equipped with foot brakes. These wheels allow the easy overcoming of bumps and imperfections in the floor.

A wide range of accessories allows this computerised medical trolley to evolve according to the specific needs of the user.



Presentation

Part Number: WM 555.101

WorkiMed Tablet Mini Cart



Presentation

Part Number: WM 555.101

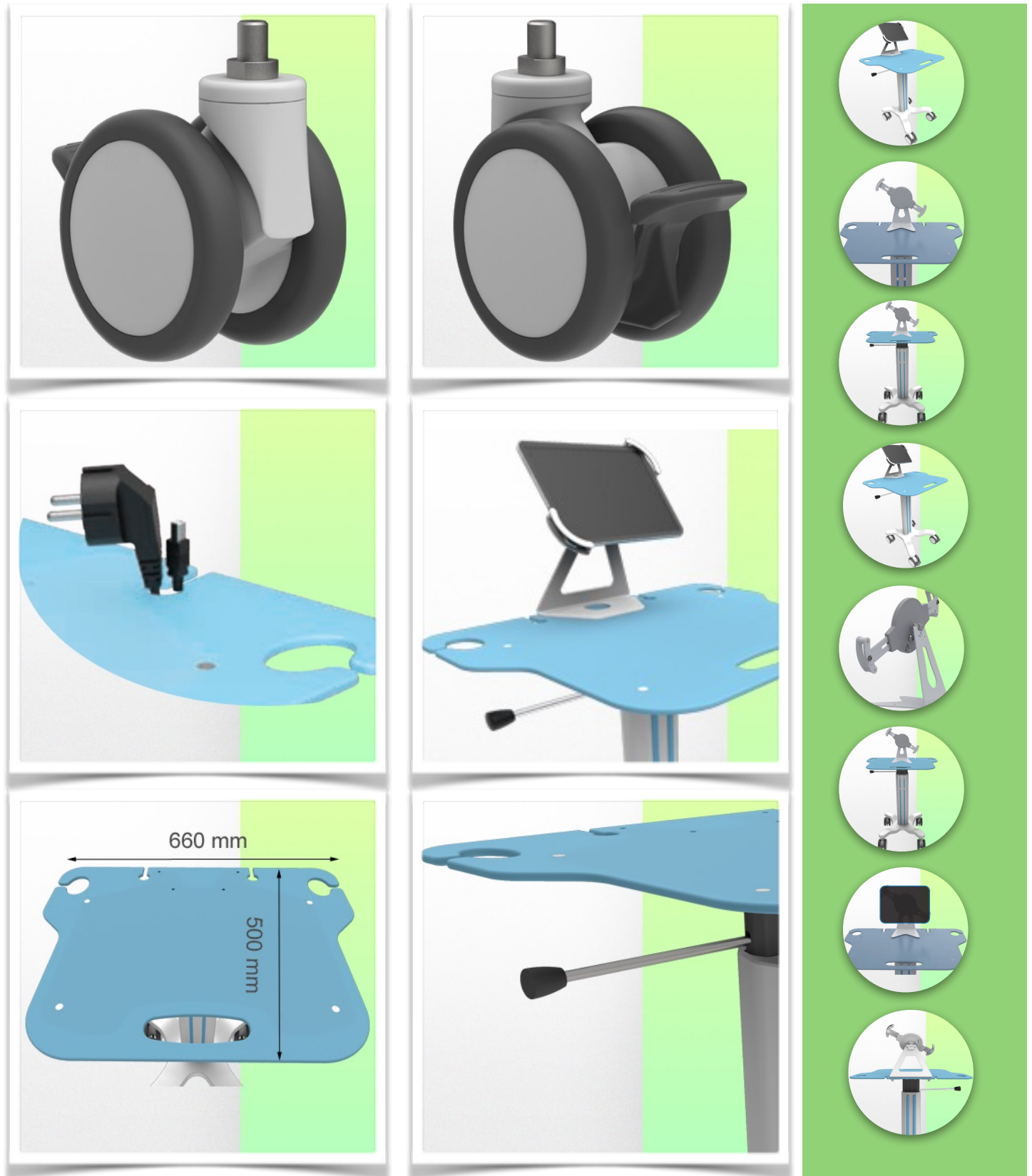
WorkiMed Tablet Mini Cart



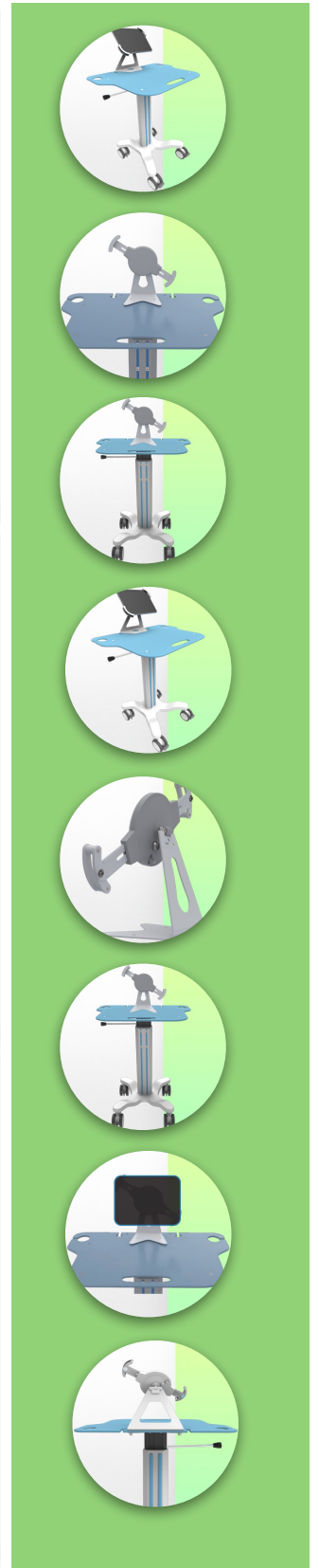
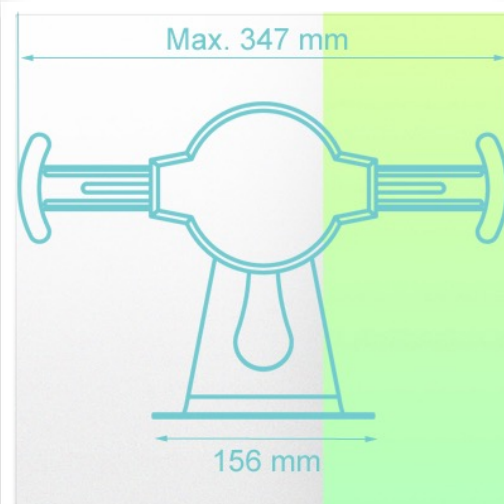
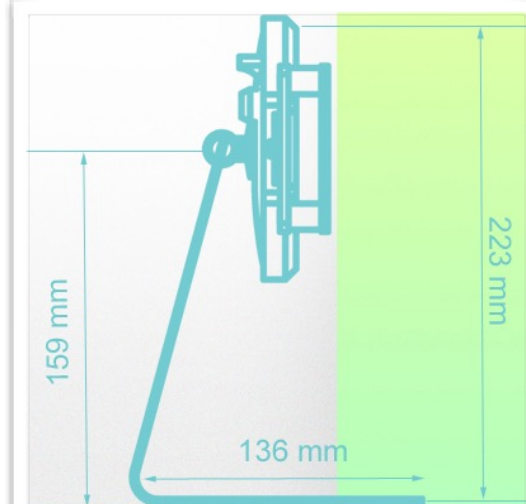
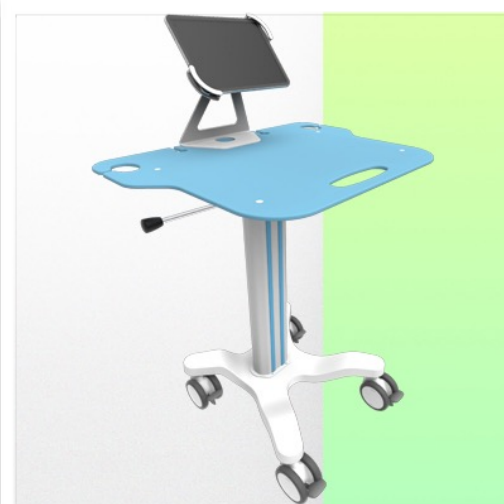
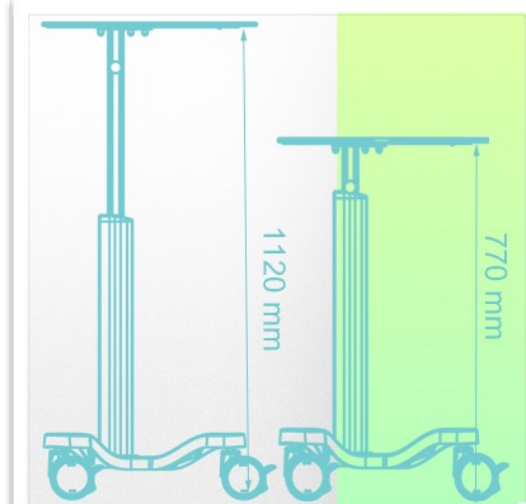
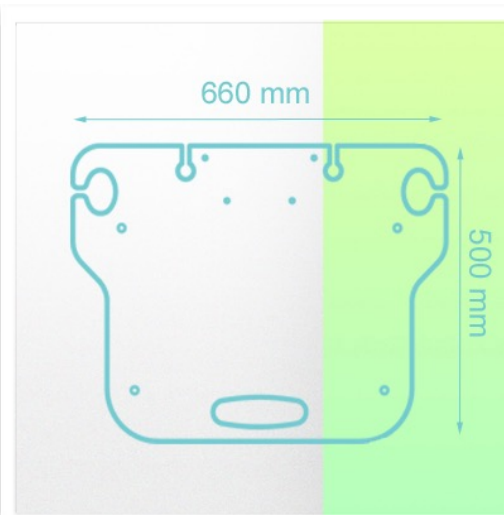
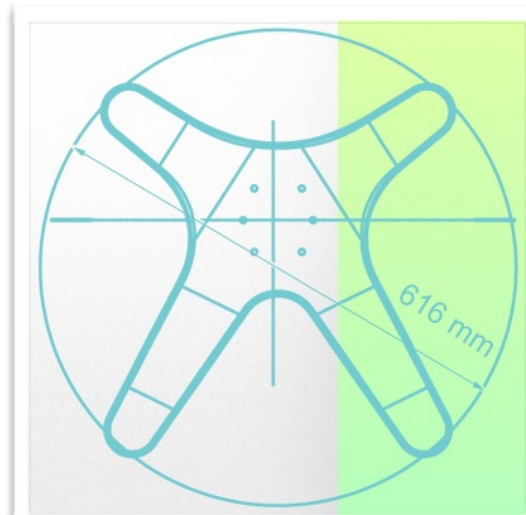
Presentation

Part Number: WM 555.101

WorkiMed Tablet Mini Cart



WorkiMed Tablet Mini Cart



Presentation

Part Number: WM 555.101

WorkiMed Tablet Mini Cart

Technical specifications:

- * High position: 1120 mm
 - * Low position: 770 mm
 - * Base diameter: 616 mm four legs
 - * Work surface: W 660 mm x D 500 mm
 - * Height adjustment capacity: 350 mm
 - * Wheel construction: Polyamide with polyurethane tread.
 - * Wheels/Lock: 4 locking wheels with brakes, 100 mm diameter
 - * Trolley weight: 18 Kg
 - * Loading capacity: 25 Kg
 - * Main assembly: Aluminium
 - * Work surface: Moulded Acrylic
 - * Colour: Ral 9016 White
 - * Secure Shelf support for tablet: 9 -11"
 - * Certificates are in accordance with : IEC60601-1: 2012 (Edition 3)
 - * CE/Rohs compliant
 - * Fully recyclable * 10 year warranty
 - * Optional keyboard and mouse
 - * Wide range of accessories
 - * For quicker and easier cleaning
 - * Simple, lightweight design for easy adjustment from sitting to standing.
 - * Supplied fully assembled with minimal packaging
 - * Made in Europe (MCC John Gough design and development)
- * We can also produce trolleys tailored to your needs and in your hospital's colours as an option



WorkiMed Tablet Mini Cart

Cleaning procedure

1. The trolley can be cleaned with most mild, non-abrasive solutions commonly used in hospitals (e.g. dilute bleach, ammonia or alcohol solutions).
2. The surface finish will be permanently damaged by strong chemicals and solvents such as acetone and trichloroethylene.
3. Do not use steel wool or other abrasive materials to clean the mounting assembly.
4. Damage caused by the use of unapproved substances or processes will not be covered by the warranty. We recommend that you test any cleaning solution on a small area that is not visible to check for compatibility.
5. Immediately wipe off any cleaning agent on the arm with a cloth dampened with water.
6. Dry the trolley thoroughly after cleaning.

CAUTION: WorkiWay SRL makes no claims regarding the effectiveness of the chemicals or processes listed as a means of infection control.

Consult your hospital infection control officer or epidemiologist. To clean or sterilize mounted instruments or accessories, refer to the specific instructions provided with those products.

